



HIGH TEA with BOOFF

An Immersive and Interactive Work of Clown Theatre

www.highteawithbooff.com

Created, Performed
& Co-written by

CLINT BOLSTER

Directed &
Co-written by

DAMIEN CASSIDY

Designed
by

JOSH MCINTOSH

PRODUCED BY



“

If you were to enter this beautiful parlour from the chaos of a summer festival, you would be instantly transported to another world entirely. In this Booff has done that most perfect of magic theatre tricks, he has made the outside go away and the inside somewhere else... Every detail complete, every element perfectly manifest. High Tea with Booff ought to be the most coveted invitation of any budding socialites dance card



Nothing Ever Happens in Brisbane

”





PRODUCTION OVERVIEW



HIGH TEA with BOOFF is a work of installation clown theatre. The show tours with its own venue – a richly detailed lounge room replete with custom made furniture, bespoke chandeliers, shared stories and piping hot tea. The work deploys auto-biographical storytelling and narrative-driven clowning.

BOOFF is a regal, mischief-loving high-status impresario. Disarmingly charming and resplendent in full-face make-up and tailored suit – he looks as if he may have sprung from a lost collaboration between Barry Humphries, Lewis Carroll, Tim Burton and Julian Clary. With a twinkle in his eye, a glint of mischief, perhaps even buffoonery... BOOFF wants you to love him, and as soon as you do, he wants you to laugh with him. Physically and verbally ridiculous, BOOFF can't blend in, but then he doesn't really try.

Anchored in true shared stories, the audience experience is akin to a visit with your favourite aunt – a surreal tea-party that's partly scripted and partly improvised. As a character, BOOFF is a larger-than-life persona in whose company all people are equal, and all are equally worthy of reverence or ribaldry. The heart of the show's appeal is BOOFF – who is both other-worldly and transgressive; at once strong and vulnerable; uniquely himself whilst also emblematic of us all – in the way that true clowns are reflective of the universal human condition.

HIGH TEA with BOOFF has been created to service the festival, community, and corporate markets – globally – oscillating, (depending on the audience), between a PG – R Rating. BOOFF resonates with a wide range of program platforms from contemporary performance programs to queer, comedy, theatre, cabaret and arts festivals, to community and corporate events – even on a barge floating down the Brisbane River; the possibilities are limitless.

The production is housed within an air-conditioned custom-built 20ft shipping container that expands to create a 6m x 5m venue. The container is a high-cube style unit – with extra height than standard – that has been richly transformed down to the finest detail. Humbly boasting a 135 SOLD OUT Performance Season across 4 Festivals in 2021 – during the COVID19 Pandemic – BOOFF has returned from his holiday off the beaches of Barbados and is looking forward to hearing audiences once again exclaiming to their friends – “I Just Got BOOFFED!”

VIDEO of Promo Reel HERE!

<https://vimeo.com/580669926>

VIDEO of AUDIENCE Vox Pop HERE!

<https://vimeo.com/592657415>



Redlands MEAT

40 Bloomfield St, Cleveland

RED MEAT.

Feel good.

- Traditional English Pork Pies
- Cornish Pasties
- Beer & Guinness Pies
- Black Pudding
- Grass Fed Beef
- Victorian Lamb
- Succulent Pork
- Black Angus
- Fresh Local Chicken
- Gourmet Sausages

“
Simply wonderful!
Stunningly dark, delightfully
twisted with a hint of
romance!
★★★★★ -Audience Member

“
We went to HIGH TEA with
BOOFF in Townsville with a
group of 6 and had just a
superb time!!! One of my
friends on the walk home said
she would die happy now that
she has been BOOFFED!!!
★★★★★ -Audience Member

KEEP CALM
EAT WELL
GRASS FED BEEF
MANIAN LAMB
RANGE PORK
OUR FAMOUS
ANGLIC DIEC
RED COW
SPECIALS

Grass Fed
Grass Fed

BOSS'S PICK
WE HAVE THE
BEST
SCHNITZEL
CHICKEN
VIENNA
DELICIOUS

WE HAVE
THE BEST
PORK PIES
IN TOWN!
VOTED BY

lean
premium mince
16.95kg
grass fed

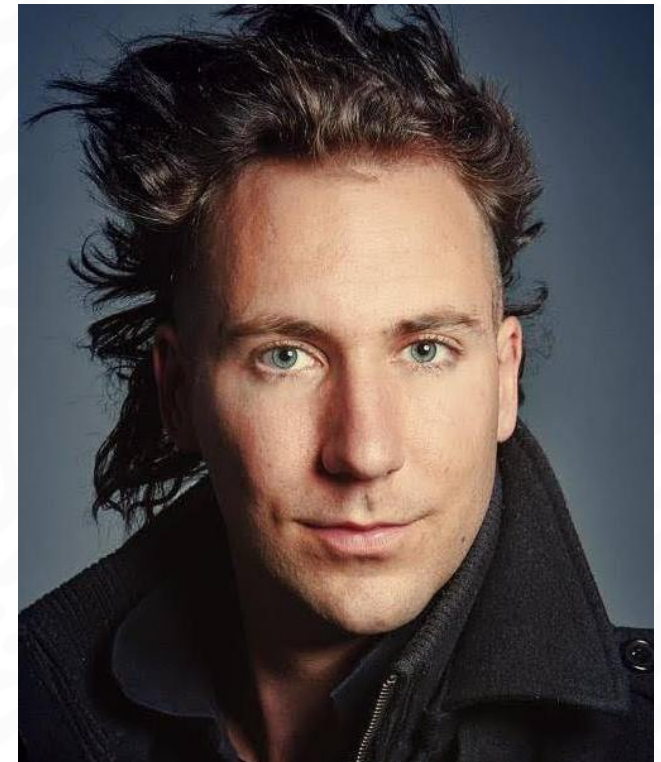
THE CREATIVE TEAM

The creative team are an internationally recognised artistic powerhouse. The company ethos is to create world-class theatre in Queensland with Queensland artists; to tour globally and engage new audiences; and in all things to demonstrate resilience, bravery and vitality.

Clint Bolster is a clown, physical actor, mask theatre specialist, stilt performer and trainer and teaching artist from Brisbane, Queensland, Australia. With over 18 years committed to developing new works and training extensively, Clint regularly performs in Australia and internationally in the United Kingdom, Europe, Singapore, Hong Kong and Japan.

Clint owns and manages three companies that each produce a busy annual program of performances, tours and education programs across Australia and around the world. Homunculus Theatre (in-schools programs), Manoeuvre (roving stilt acts), and The Mask Family (richly detailed full-face roving mask characters). As well as in-theatre tours, Clint's companies are highly active in the community, cultural and education sectors.

He was recently accepted into the Cirque du Soleil and Slava Snow Show database of potential clowns for future productions and is a proud Queensland member and mentor for The Media, Entertainment and Arts Alliance, and board member for Indel-Ability Arts. Clint has developed an incredibly reliable and robust local and international network. His unique and innovative creations are represented by over 70 international production houses and arts agencies worldwide and have played to global audiences in the millions.

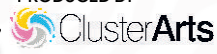


CLINT BOLSTER

**CREATOR & CO-WRITER
& PERFORMER**



PRODUCED BY



**Queensland
Government**

“

"HIGH TEA with BOOFF

was exactly what the doctor ordered for Cairns Festival. Staff, crew and audiences across all ages and backgrounds, were at once mystified and left in stitches and sometimes shaking their heads wondering what just happened. The sights and sounds associated with the work created a buzz in our region that is still rippling, and has ignited many ideas for capacity building and development within our own region. A fantastic team to work with, communication lines are always open and negotiable – it just makes the experience even sweeter. Can't wait to see what else Booff comes up with!

★★★★★

**Roz Pappalardo, Artistic Director
Cairns Festival**

”



DAMIEN CASSIDY

DIRECTOR & CO-WRITER



Damien Cassidy is a broadly experienced writer, director and producer based in Brisbane working across festivals, contemporary music, theatre, cabaret and film. He has a background in communications and literature and is drawn to projects and collaborations that engage and extend cultural and historical conversations.

He has delivered some of the most successful arts and cultural programs in Australia, having held senior communications and producing roles for Brisbane Festival, the World Science Festival, World Theatre Festival, Brisbane Powerhouse and Queensland Theatre Company. He is the recipient of two Matilda Awards for excellence in the performing arts.



JOSH MCINTOSH

PRODUCTION DESIGNER

Josh McIntosh is an award-winning designer whose work has been seen on stages across Australia. Josh has worked extensively with major Queensland cultural organisations including Queensland Performing Arts Centre, Queensland Ballet, Opera Queensland and Queensland Theatre Company. His design skills are augmented by his strong grounding as a builder, maker and engineer.

He has designed several successful national touring productions including stage adaptations of A Christmas Carol and Animal Farm for Shake & Stir. Josh is the recipient of three Matilda Awards for excellence in the performing arts.



PRODUCED BY
Cluster Arts



Australia
Council
for the Arts



PRODUCTION CREDITS

Creator, Co-Writer & Performer	:	Clint Bolster
Co-Writer & Director	:	Damien Cassidy
Producers	:	Debbie Wilks, Kate Malone & Charles Wiles - Cluster Arts
Associate Producer	:	Rob Tannion
Corporate Enquiries	:	Allie Wilde
Production Designer	:	Josh McIntosh
Lighting Designer	:	Jason Glenwright
Sound Designer & Technical Manager	:	Guy Webster
Production Manager & Stage Managers	:	Ben Mills & Marissa Hillar
Videographer	:	Tnee Dyer
Photographers	:	Justin Ma & Barbara Lowing
Costume Designers	:	Joanne Farer & Barbara Kerr
Wig Maker	:	Elise Pontion
Wig Stylists	:	Rebecca Anthony & Michael Green
Clown Nose Maker	:	Tony Kishawi
Makeup Designer	:	Julieanne Edwards
Script Sound Board	:	Penny Everingham

HIGH TEA with BOOFF has been assisted by The Australian Government through the Australia Council for the Arts funding and advisory body and the Queensland Government through the Arts Queensland Showcase Program and Playing Queensland Quick Response Grant.

“

*“Such an amazing talent –
BOOFF for Primeminister!”*

★★★★★ -Audience Member

”

“

*“Another magical
HIGH TEA with BOOFF – BOOFF
was enchanting as always,
uniquely entertaining!”*

★★★★★ -Audience Member

”

“

“OMG we LOVED BOOFF!”

★★★★★ -Audience Member

”



PRODUCTION OPTIONS

OPTION 1

30 Min Production Version

An ideal format to consider is 4 x 30-minute shows per night, starting on the hour at 6pm, 7pm, 8pm and 9pm. The company requires a minimum of 15 minutes to turn around the venue between performances.

- ▶ 1 Week
- ▶ 5 Nights - Per Week
- ▶ 20 Performances x 10 Audience Members
- ▶ PAX - 200

VENUE ACTIVATION

1 Hour Pre-Show

- ▶ Music, Lights, Customised BOOFF Voice Overs, Bubble & Smoke Machines
- ▶ 4 Hour Call
- ▶ 4 x 30 Min Shows
- ▶ 30Min Post Show
- ▶ Music, Lights, Customised BOOFF Voice Overs, Bubble & Smoke Machines



PRODUCTION OPTIONS

OPTION 2

15min Production Version

An ideal format to consider is 12 - 14 15 minute shows per night. The company requires a minimum of 5 minutes to turn around the venue between performances. This option serves bisbuits - but no tea.

- ▶ 1 Week
- ▶ 5 Nights Per Week
- ▶ 70 Performances x 10 Audience Members
- ▶ PAX - 700

VENUE ACTIVATION

1 Hour Pre-Show

- ▶ Music, Lights, Customised BOOFF Voice Overs, Bubble & Smoke Machines
- ▶ 4 Hour Call
- ▶ 30Min Post Show
- ▶ Music, Lights, Customised BOOFF Voice Overs, Bubble & Smoke Machine



PRODUCTION OPTIONS

OPTION 3

Drop In & Drop Out Version

A four-hour drop-in, drop out immersive experience. Audiences will still be capped at a max of 10 people at a time, with short 5 minute experiences. Within each 1 Hour Block , a 5 -10 minute water/toilet break is factored in.. This also allows us to remain Covid safe with an internal wipe down of high traffic or high contact areas.

- ▶ 1 Week
- ▶ 5 Nights Per Week
- ▶ Drop In & Drop Out - Connection & Photo Opportunity
- ▶ PAX - 4000

VENUE ACTIVATION

1 Hour Pre-Show

- ▶ Music, Lights, Customised BOOFF Voice Overs, Bubble & Smoke Machines
- ▶ 4 Hour Call
- ▶ 30Min Post Show
- ▶ Music, Lights, Customised BOOFF Voice Overs, Bubble & Smoke Machine



“

“In an age where clowns reveal our hidden self, BOOFF is both sharp and insightful, yet aware of the provocations which are designed to unlock insights.

BOOFF invites us to unite as we focus on the particular, the unusual, the rare. BOOFF is a masterwork, that will leave you feeling uncomfortably settled.”

★★★★★ -Paul Bishop

”



2021-2022 TOUR DATES

Circfest22 Meanjin 21st – 24th April 2022

| <https://circfest.live>



THE NOOSA ALIVE FESTIVAL
21/07 2021 – 24/07 2021
<https://www.noosaalive.com.au/whats-on-noosaalive/booff/>

CARINS FESTIVAL

02/10 2021 – 05/10 2021

<https://www.cairns.qld.gov.au/festival>

REDLAND PERFORMING ARTS CENTRE

02/12 2021 – 18/12/2021

<https://www.rpac.com.au/what-s-on/all-events/high-tea-with-booff/>

THE NORTH AUSTRALIAN FESTIVAL OF ARTS

07/07 2021 – 11/07 2021 | 14/07 2021 – 18/07 2021

<https://whatson.townsville.qld.gov.au/events/nafa/high-tea-with-boof>



IT'S LIVE
in Queensland

NORTH AUSTRALIAN
FESTIVAL OF ARTS
2 JULY - 1 AUGUST 2021
TOWNSVILLE

nafa-tsv.com.au

“

"HIGH TEA with BOOFF Is a rare and splendid opportunity to step briefly off this troubled planet and go BOOFFing.

My first BOOFF was a few months ago at Noosa. I was BOOFFED again last night. And I'm getting another BOOFFING on Saturday night. Oh god, I hope this isn't habit-forming...When BOOFF was live-streaming during the first COVID lockdown I won a prize, the BOOFF MEMORIAL PINEAPPLE DISH. He autographed it for me but it rubbed off so I took it to last night's show to be re-signed. BOOFF is simply World-Class!"

★★★★★ -Audience Member

”





PRODUCED BY
ClusterArts



Australia
Council
for the Arts



Queensland
Government

TOURING

THREE COMPANY MEMBERS TOUR WITH THE SHOW

- 1) Performer
- 2) Production Manager
- 3) Producer / Company Manager

FEE

Company fee can be advised upon request and will be dependent on the duration and location of the proposed presentation.

PERFORMANCE SCHEDULE

Presenters have some flexibility as to how show times are scheduled depending on other venue and festival activities. The optimal performance duration of HIGH TEA WITH BOOFF is 30 minutes. The company requires minimum 20 minutes between shows for turnaround.

VISAS

Presenter to arrange and pay for company visas and travel insurances.

TRAVEL & FLIGHTS

Presenter to provide. For international flights, premium economy seats are required for Clint Bolster due to his height of 197cm. For domestic Australian flights, exit row seats in economy are sufficient. Standard non exit row economy seats for domestic Australian flights are not sufficient for Clint. Standard economy seats are fine for other company members.

ACCOMMODATION

Presenter to provide. Minimum 3.5-star accommodation for all company members. Company members can be housed in shared accommodation, subject to mutual agreement. All company accommodation must include laundry facilities. Accommodation location is ideally within 2km or 15 minute walk to the venue.

DRESSING ROOMS

One secure dressing room is required for the duration all show calls. The room must have a full size wardrobe mirror and a make-up mirror with ample lighting. Either in-theatre laundry or accommodation-based laundry facilities are required for all bookings.

CALL TIMES

A minimum three-hour hair & make-up call is required for any BOOFF performance, media call, promotional booking or other event. A secure dressing room with full size wardrobe mirror and a make-up mirror with ample lighting is required for all calls.

CREW REQUIREMENTS

Presenter to provide. Most performance seasons can be serviced with one FOH staff during activation times.

“

“HIGH TEA with BOOFF was an exceptional one-of-a-kind performance. It is like nothing you have ever experienced before, and one you won't soon forget! Definite must see for all festival goers.”

The North Australian Festival of Arts

★★★★★

”

“

“What a truly hilarious evening with BOOFF. Our faces are literally hurting from laughing so much!”

★★★★★ -Audience Member

”





PRODUCED BY
ClusterArts



Australia
Council
for the Arts



Queensland
Government

TECHNICAL

CONTAINER DIMENSIONS

When closed up for transit or storage the unit is an internationally standard high-cube 20ft shipper. Dimensions: L-6058; D-2438; H-2896

When open in show mode the depth increases and dimensions are: L-6058; D-4364; H-2896. Unit weight is approximately 3.5 tonnes.

Detailed unit plans can be provided upon request.

BUMP-IN OVERVIEW

The company production manager **MUST** be present onsite when the container arrives for site installation. A minimum of 16 hours is required between company/unit arrival and first performance. An exact bump-in schedule will be drafted with presenters on a case-by-case basis.

CARNET

Touring party to provide.

SITE REQUIREMENTS

The minimum floor area required for the unit is 10m x 10m. The site area must be flat, stable ground. The site area can not be at risk of flooding in the event of rain. Unit travels with sets of chocks. An egress corridor of 1.2m must be maintained 360° around the unit for technical access. The front of the venue where the audience enter requires 3m clear egress for front of house elements such as signage and bollards. Unless agreed by the company, the unit can not be directly abutted to another structure.

WEATHER

The unit can not operate in wind speeds higher than 70km/h. If heavy rain or storms are forecast, the venue may have to close for the duration of the weather event.

POWER

Presenter to provide two dedicated 15 amp circuits for venue operations. The unit has internal power, lighting and air conditioning systems. Detailed unit plans can be provided upon request.

CREW REQUIREMENTS

Bump-in: 4 x mechs for four hours

Bump-out: 4 x mechs for four hours

FREIGHT

Presenter to arrange and pay. The shipping container tours out of Brisbane, Queensland unless otherwise advised. The Company logistics partner is Roadpro Event Services based in Archefield, Qld and presenters can be put in touch with RoadPro for freight movements within Australia.

SECURITY

Presenter to provide 24hr security throughout the period that the unit is onsite.

PROPS AND CONSUMABLES

Presenter to provide tea, as well as biscuits or cake for the season. This has, in the past, been done via a local partnership with a provider in the host city.



PRODUCED BY



Queensland
Government

TECHNICAL

TOUR REQUIREMENTS As at 11/11/2021

Production Manager	:	Ben Mills	:	0468 333 038
Technical Manager	:	Guy Webster	:	0404 041 715
Performer	:	Clint Bolster	:	0421 524 401
Producer	:	Charles Wiles	:	0472 602 322

(THE HTWB VENUE)

- ▶ is fully self-contained with its own power, lighting, audio and aircon systems.
- ▶ once assembled the venue is 4450 high, 7500 deep and 6058 wide.
- ▶ venue dimensions include external bollards, awnings, signage and treads.
- ▶ 12m x 12m site footprint required during venue operation.
- ▶ 100% reliant on stable supplied power (see below).
- ▶ Max capacity of 11 - one performer and 10 patrons.

TOURING PARTY

- ▶ Touring Party of Three
- ▶ Performer
- ▶ Production Manager
- ▶ Technical Manager



PRODUCED BY



Queensland
Government

TECHNICAL

SITE (PRESENTER TO SUPPLY)

- ▶ Minimum 12m x 12a area for venue setup (fenced off if the festival is live during).
- ▶ Flat, stable ground not susceptible to flooding or subsidence.
- ▶ 2 x 3m Ladders - (A-Frame or platform).
- ▶ Access to drinking water within 50m of the venue for dishwashing & venue cleaning.
- ▶ 24 hour On-Site Security is essential for HTWB venue safety.
- ▶ 10 x 2.6m pieces of Temporary Fencing with black meshing to be provided & installed around the rear portion of the container & marquee. Please see Appendix A.
- ▶ Covid QR sign in signage as required by local authorities.
- ▶ All site approvals, site protection measures (truck matting) & site restoration.

SITE ACCESS

- ▶ Access for container truck and/or crane to the site.
- ▶ HTWB container to be positioned on-site direct from the truck or via crane.
- ▶ The truck is a side loader (19m long).
- ▶ Clearance of 4 m is required on either side of the truck.
- ▶ The presenter/festival is responsible to seek any site or council approvals, site protection (ie truck matting for delivery/pick up).



PRODUCED BY



Queensland
Government

TECHNICAL

POWER (PRESENTER TO SUPPLY)

- ▶ 2 x 15 amp circuits on a distroboard or equivalent, 1 of these will be used for all Technical equipment and the other is used for our built-in air conditioner unit.)
- ▶ 1 x 10 amp circuit (used externally for BOH work light and water heating in the marquee.)
- ▶ Our preference for power is a distribution board located within our 12m x 12m area allocated for our venue.
- ▶ Please note, that our distribution board or equivalent will need to be used solely by High Tea with Booff and not shared with anyone else.

STAFF REQUIREMENTS (PRESENTER TO SUPPLY)

- ▶ 4 x mechs for 4 hours
- ▶ PLUS
- ▶ Access to a forklift with a pallet & driver for up to 1 hour
- ▶ To lift front signage into position
- ▶ And lift all equipment to the roof



2 extra staff for a single heavy lift
(signage) approximately 15 minutes



PRODUCED BY



Queensland
Government

TECHNICAL

SHOW CONSUMABLES (PRESENTER TO SUPPLY)

- ▶ English Breakfast Tea (calculating 1 bag/person)
- ▶ Biscuits - Iced Vovos and Monte Carlos / Kingstons
- ▶ Small dishwashing liquid
- ▶ Sponges x 2

(Access to drinking quality water is essential. HTWB provides all crockery and spoons required for the show)

SITE SECURITY REQUIREMENTS(PRESENTER TO SUPPLY)

- ▶ 24-hour on-site security is required for venue security and public safety
- ▶ Rear stage area to be temp fenced off as secure backstage area, with privacy mesh.
- ▶ If the venue is not set within a fully secured site, a 12 x 12 m temp fencing perimeter is to be provided.

VENUE SAFETY REQUIREMENTS

The venue can operate in wind speeds of up to 55km/hr B22- if forecast weather conditions exceed this wind speed - and the venue is outdoors - the company will need to dismantle roofing signage elements and the presenter will need to provide GET-OUT level technical support for this to happen. Once the weather event has passed, the presenter will need to provide GET-IN levels of support to re-open the venue.B23

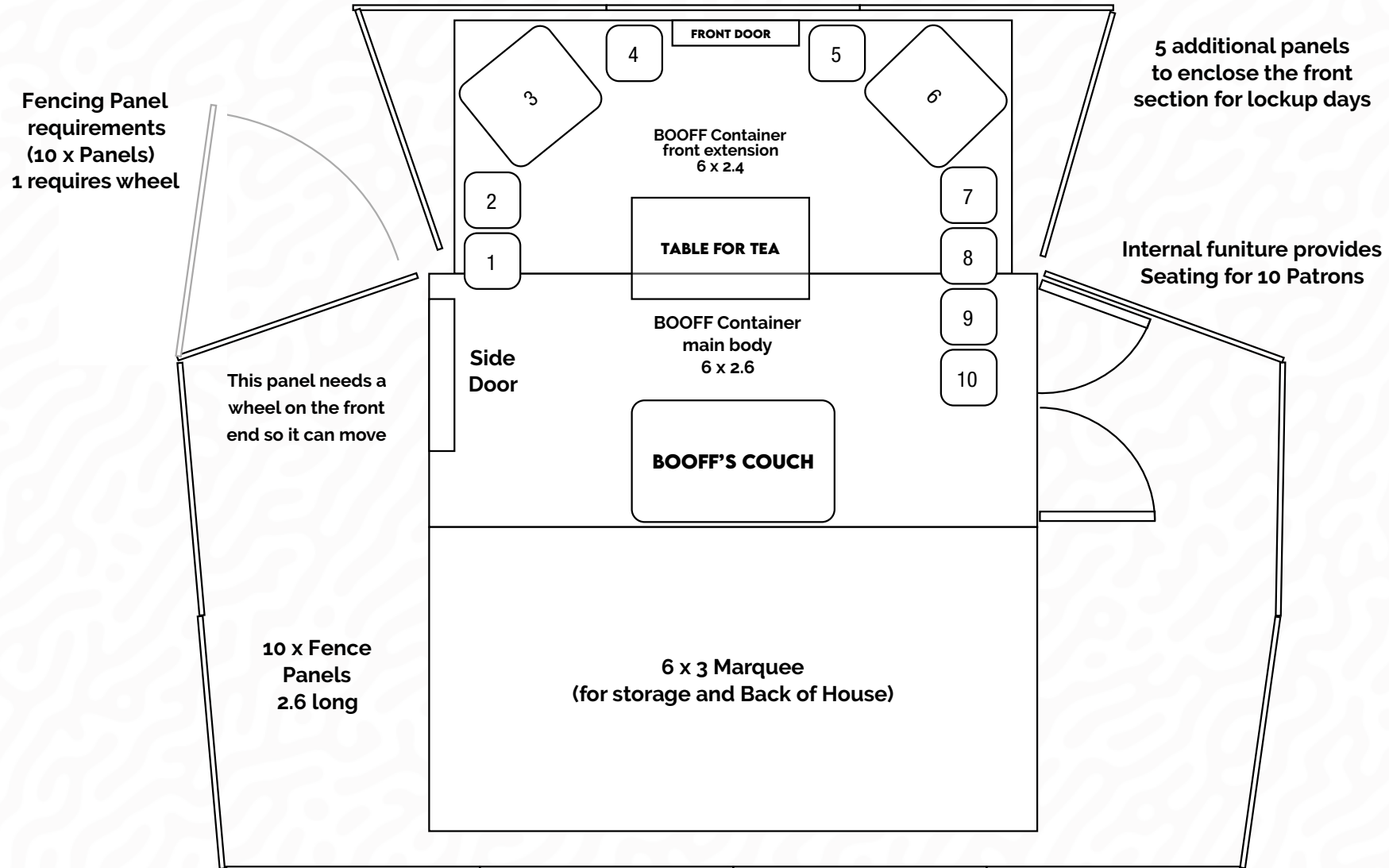


PRODUCED BY



Queensland
Government

HIGH TEA with BOOFF LAYOUT





"HIGH TEA with BOOFF was exactly what the doctor ordered for Cairns Festival. Staff, crew and audiences across all ages and backgrounds, were at once mystified and left in stitches and sometimes shaking their heads wondering what just happened. The sights and sounds associated with the work created a buzz in our region that is still rippling, and has ignited many ideas for capacity building and development within our own region. A fantastic team to work with, communication lines are always open and negotiable – it just makes the experience even sweeter. Can't wait to see what else Booff comes up with!"

★★★★★ -Cairns Festival



ACKNOWLEDGEMENTS



BOOFF has been assisted by the Australian Government through the Australia Council its arts funding and advisory body and the Queensland Government through the Arts Queensland Showcase Program.

SPECIAL THANKS TO



Dr. Caroline Heim, Telstra, SunPAC, Camp Hill Antique Centre, EC Venue, Riverside Baptist Church, Roadpro Event Services for logistical support and Jack Morton for assistance in sourcing our production venue.

PRODUCED BY



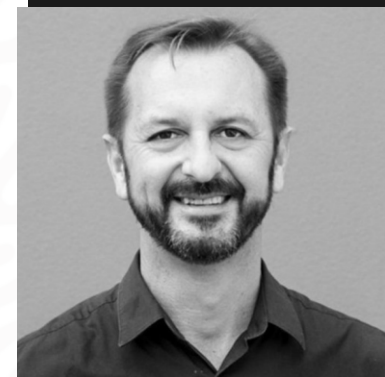
FESTIVAL, VENUE & EVENT BOOKINGS, CONTACT ClusterArts



Debbie Wilks
(Executive Director)
debbie@clusterarts.com
0433 554 801



Kate Malone
(Executive Producer)
kate@clusterarts.com
0448 115 698



Charles Wiles
(Producer)
charles@clusterarts.com
0472 602 322



CORPORATE BOOKINGS, CONTACT

Allie Wilde
(Associate Producer)
allie@wildeapplause.com
0414 437 741

